

**ALLDAY  
& MILLER**



Wooburn Close, Uxbridge, UB8 3UB  
£1,400 Per month

 1  1  1  C



Wooburn Close, Uxbridge, UB8 3UB

**£1,400 Per month**

- One Bedroom House
- Modern Bathroom
- Cul de sac Location
- Close To Hillingdon Hospital
- Fitted Kitchen with Appliances
- Front Garden with Small Patio
- Fitted Wardrobes
- Allocated Parking

## Description

This modern one bedroom house is a perfect starter home. Beautifully presented throughout, with off street parking and a front garden. The property boasts a spacious living room with wood flooring and contemporary kitchen. Heading upstairs via a spiral staircase is a spacious double bedroom and family bathroom.

To the outside of the property you have an allocated parking bay and a well maintained front garden offering a small patio area.

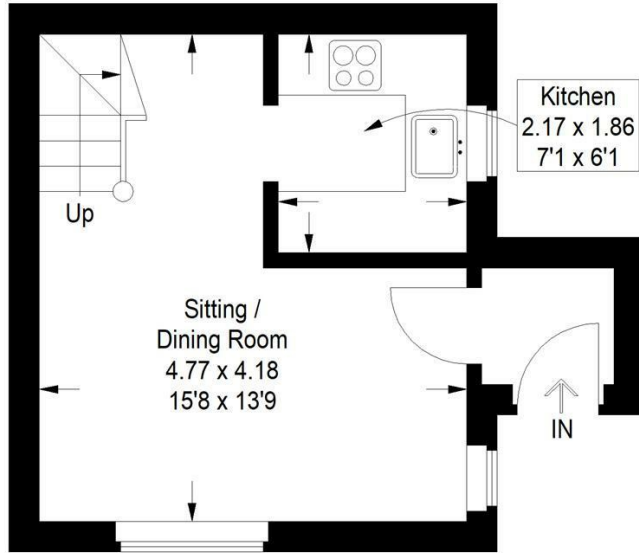
## Situation

Wooburn Close is a quiet cul de sac just off Lees Road, within easy reach of the Uxbridge Road with its shops and transport links. Hillingdon Hospital, Stockley Business Park, Brunel University and Uxbridge Town Centre are a short distance away with access to the Metropolitan/Piccadilly lines.

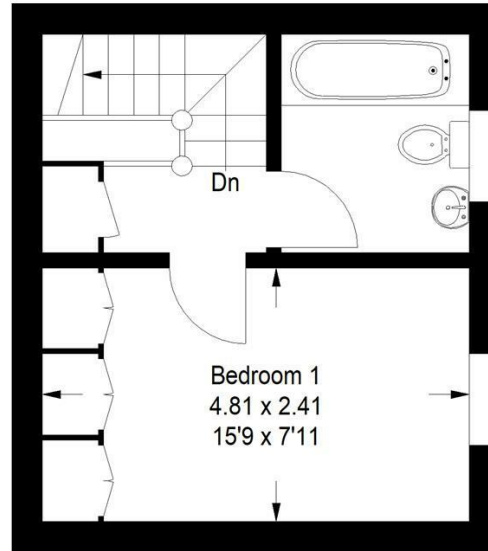


## Floor Plans

Approximate Gross Internal Area = 42.2 sq m / 454 sq ft



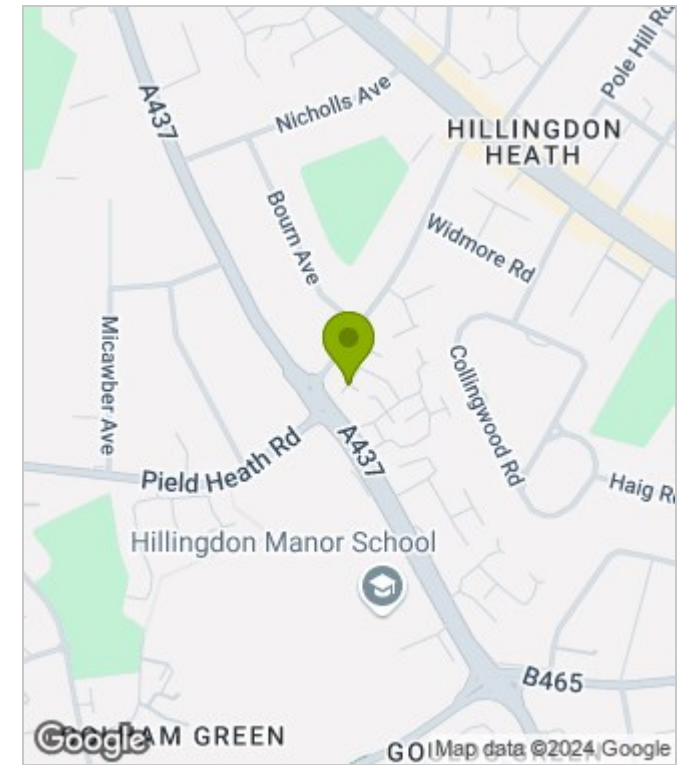
Ground Floor



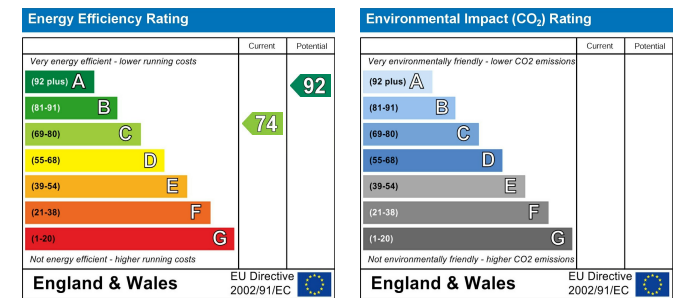
First Floor

Illustration for identification purposes only, measurements are approximate, not to scale.

## Area Map



## Energy Performance Graph



These particulars, whilst believed to be accurate are set out as a general outline only for guidance and do not constitute any part of an offer or contract. Intending purchasers should not rely on them as statements of representation of fact, but must satisfy themselves by inspection or otherwise as to their accuracy. No person in this firm's employment has the authority to make or give any representation or warranty in respect of the property.